



So What Now?!

Evaluation and Data Collection Webinar Series

Mapping Your Program Ideas to a Useful Logic Model

January 18, 2012



Education, Training & Research Associates (ETR)
251 Rhode Island St., Suite 204
San Francisco, CA 94103
(415) 252-2402
<http://www.etr.org/tabono>



Tabono means “oar” or “paddle” in the Andinkra language of West Africa. It symbolizes Unity of Purpose and Hard Work to reach a destination or goal.

Tabono CBA works with Organizations to:

- Improve HIV Programming
- Reduce HIV Risk and Transmission in various communities

- **Evidence Based Interventions (EBI):**

Pre-Implementation, Implementation, Maintenance and Adaptation support for: SIHLE, FOY, d-up!, SISTA

- **Public Health Strategies (PHS):**

Guidance for CBOs that provide Counseling, Testing, Referral (CTR and Comprehensive Risk Counseling and Services (CRCS)

- **Monitoring & Evaluation (M&E):** Training and Technical Assistance (TA) on evaluation planning, process and outcome measures and tools, community discovery, logic modeling and more...

- **Cultural “Competency”:**

Customized Trainings and TA on workplace diversity, individual and group facilitation skills, and all related special issues faced by the youth, LGBTQ, MSM and women populations in your local community.

Meet Your Presenters: B.A Laris

A few B.A Highlights:

- **ETR since 1999**
- **CDC – DHAP Tabono CBA**
- **FYSB & State PREP**
- **CDC - DASH evaluations on nutrition and physical activity**
- **GLBTQ support for districts**
- **CA Office of Family Planning (OFFP)**
- **TA and Evaluation in West Africa**
- **Avid Triathlete, Pilates Instructor and Mom**





GOOD LUCK

Obit
Funeral

Webinar Agenda

- Welcome / Introductions
- Objectives
- What is a Logic Model?
- Creating Your Logic Model
- Finishing Up
- Questions and Answers



Webinar Objectives

- Enhance knowledge of the usefulness of the logic model
- Improve skills to write statements for components of logic model
- Improve skills to write *SMART* objectives

What is a Logic Model?



Logic Models are ...



Where are we?

Inputs and Resources

How will we get there?

Activities and Outputs

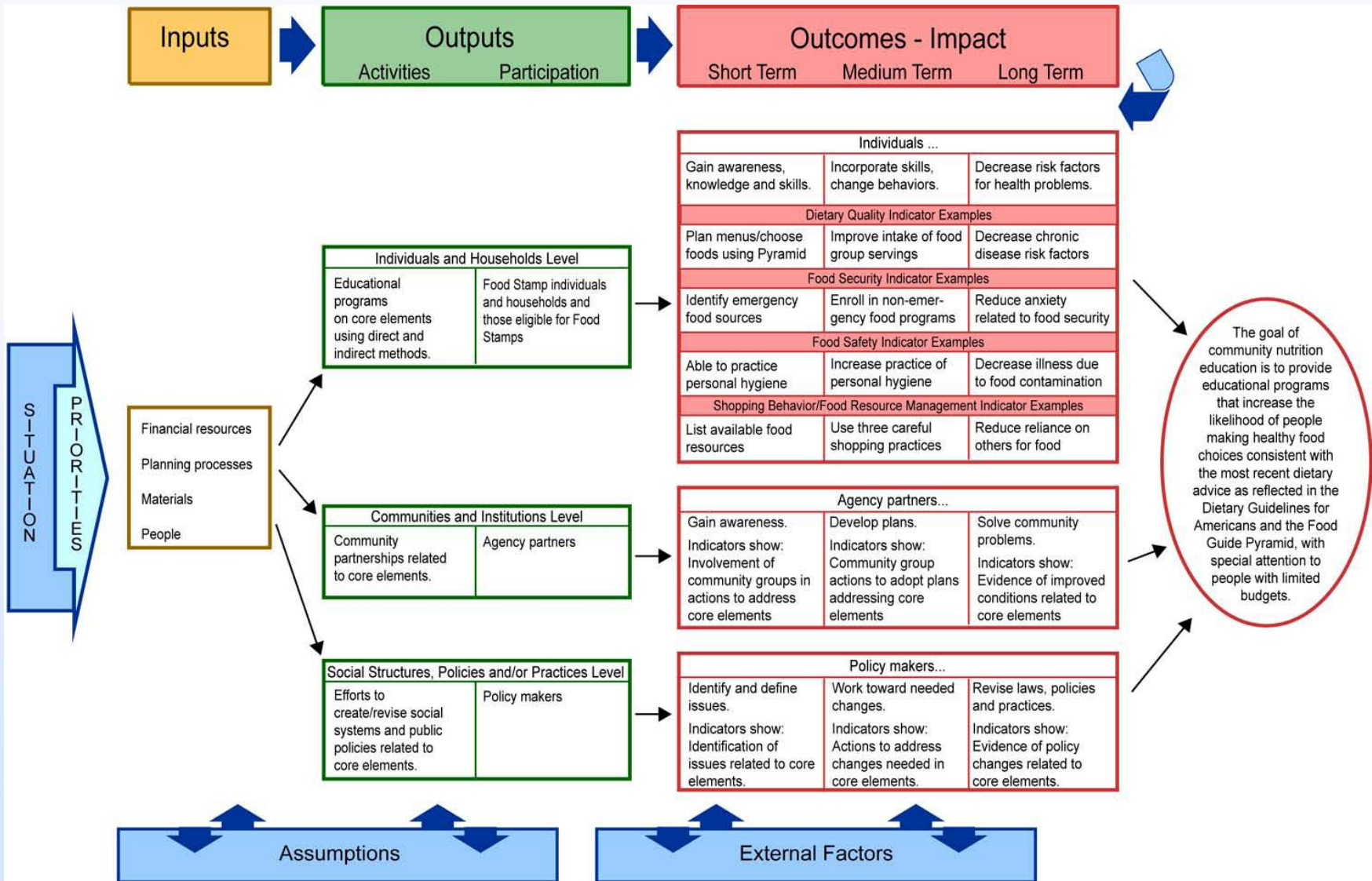
Where do we want to go?

Outcomes

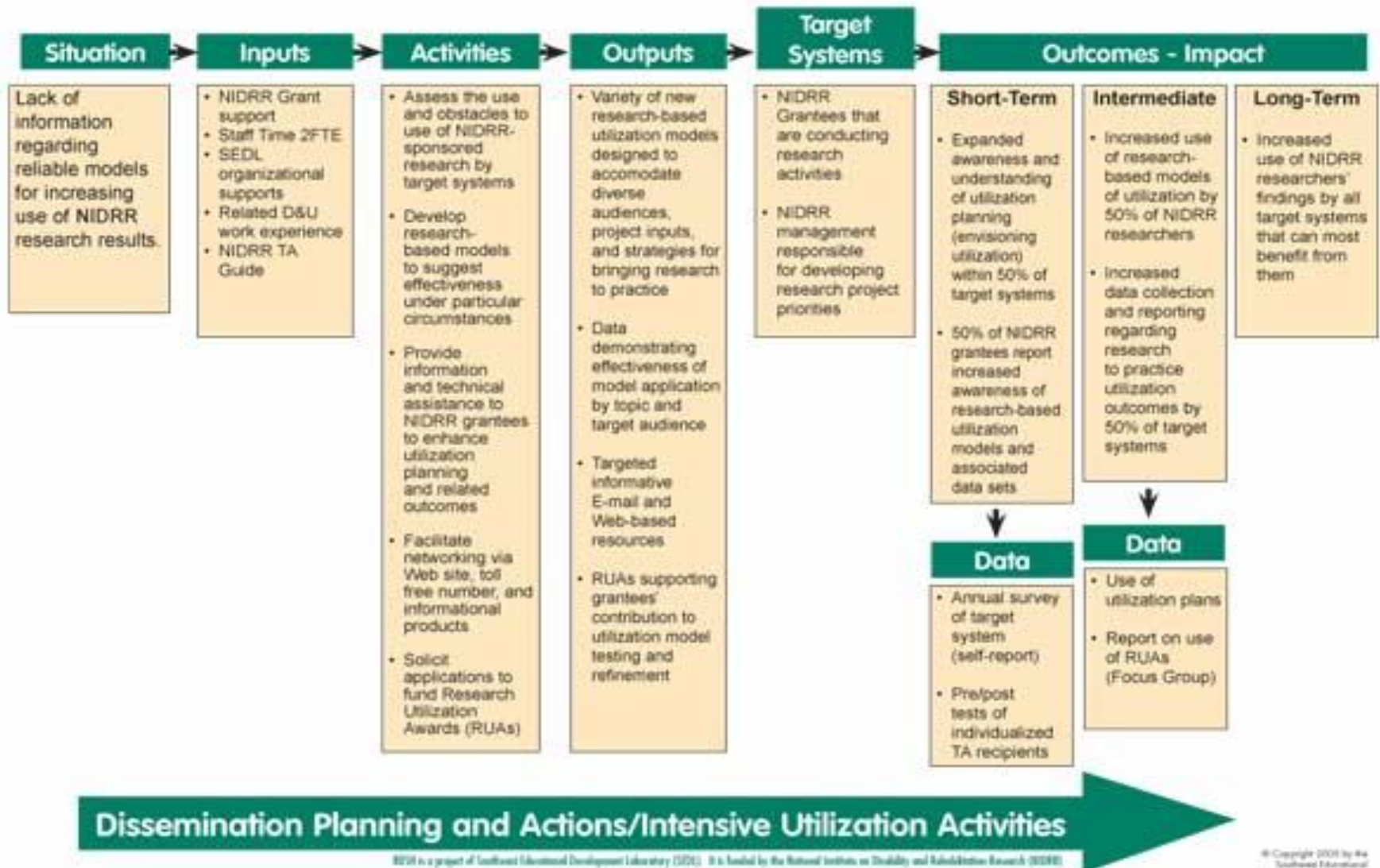
Basic Components

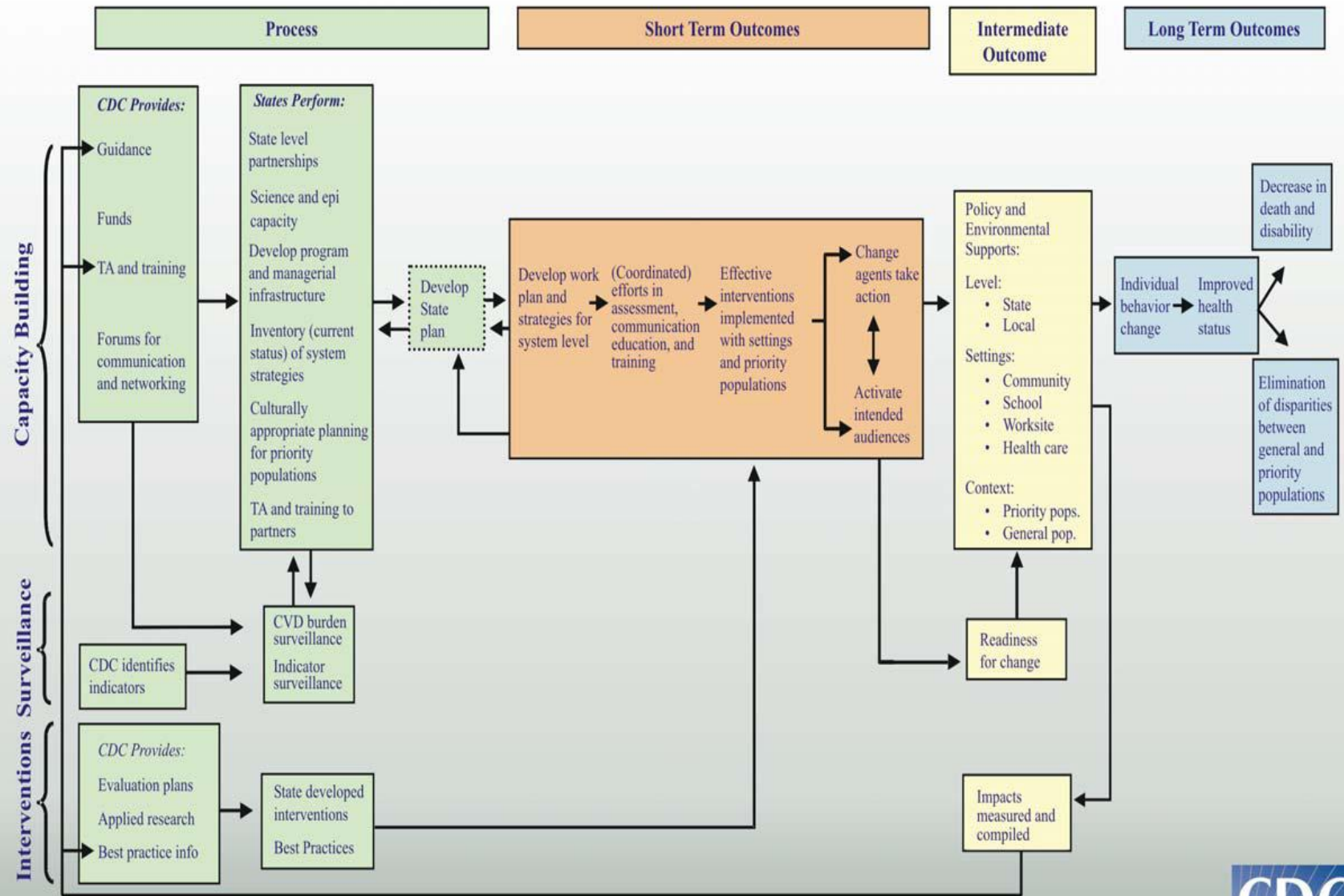


However, there are many ways to depict a logic model...



RUSH Logic Model





Inputs

- What resources you have
 - Staff
 - Materials
 - Curricula
 - Funding
 - Equipment



Activities

- What you will do
 - Select a curriculum
 - Develop a training program
 - Train educators
 - Implement
 - Identify a coalition



Outputs

- What happened
 - # youth served
 - # educators trained
 - Curricula or training packages being developed
 - Policies
 - Reports



Outcomes

- Your intended results
 - Short-term
 - Intermediate
 - Long-term



Creating Your Logic Model



Before starting...

- Have a clear and comprehensive understanding of the problem and the resources



Where are we?



Do your research...

- Review existing data
- Conduct a needs assessment
- Collect additional data
- Review theories and published research

Filling in Your Logic Model



GOAL:

PROBLEM

INPUTS

ACTIVITIES

**SHORT-
TERM
OUTCOMES**

**INTER-
MEDIATE
OUTCOMES**

OUTPUTS

From your research...

- Fill in your problem statement and your inputs



GOAL:

PROBLEM

HIV treatment adherence rates are low among African Americans and Latinos

INPUTS

- **Drug subsidies**
- **Federal funding for clinics**
- **Health educators**

ACTIVITIES

OUTPUTS

SHORT-TERM OUTCOMES

INTER-MEDIATE OUTCOMES

Where do we want to go?



Goal Statement

- Broad statement of desired accomplishment or condition
- Establishes overall direction and focus
- Not always intended to be attained
- Specific to your situation

Goal Statement Examples

- To reduce HIV rates among adolescents in X community
- To reduce obesity rates in young adolescents in X state
- To improve cardio-vascular fitness of youth participating in X program

GOAL: Increase HIV treatment adherence rates among African Americans and Latinos living with HIV in the urban areas of our state

PROBLEM

HIV treatment adherence rates are low among African Americans and Latinos

INPUTS

- Drug subsidies
- Federal funding for clinics
- Health educators

ACTIVITIES

OUTPUTS

SHORT-TERM OUTCOMES

INTER-MEDIATE OUTCOMES

Short-Term Outcomes

- Immediate Results
 - Knowledge
 - Awareness
 - Attitudes
 - Skills
 - Intentions*



Short-Term Outcome Examples

- Increase awareness of pregnancy prevention resources in community
- Increase knowledge of contraception options
- Improve self-efficacy to use condoms
- Increase intentions to delay initiation of sexual intercourse

GOAL: Increase HIV treatment adherence rates among African Americans and Latinos living with HIV in the urban areas of our state

PROBLEM

HIV treatment adherence rates are low among African Americans and Latinos

INPUTS

- Drug subsidies
- Federal funding for clinics
- Health educators

ACTIVITIES

OUTPUTS

SHORT-TERM OUTCOMES

- Increase knowledge why adherence is important
- Increase intentions to adhere to treatment

INTER-MEDIATE OUTCOMES

Intermediate Outcomes

- What you do with short-term outcomes
 - Behaviors
 - Practices
 - Actions
 - Intentions*



Intermediate Outcome Examples



- Delay initiation of sexual activity
- Increase condom use

GOAL: Increase HIV treatment adherence rates among African Americans and Latinos living with HIV in the urban areas of our state

PROBLEM

HIV treatment adherence rates are low among African Americans and Latinos

INPUTS

- Drug subsidies
- Federal funding for clinics
- Health educators

ACTIVITIES

OUTPUTS

SHORT-TERM OUTCOMES

- Increase knowledge why adherence is important
- Increase intentions to adhere to treatment

INTER-MEDIATE OUTCOMES

- Increase incidence of having medication
- Decrease rates of missed appointments

Long-Range Outcomes

- May reflect your goals
- Intentions as intermediate outcome and behaviors as long-range
- Project-specific sequencing

GOAL: Increase HIV treatment adherence rates among African Americans and Latinos living with HIV in the urban areas of our state

PROBLEM

HIV treatment adherence rates are low among African Americans and Latinos

INPUTS

- Drug subsidies
- Federal funding for clinics
- Health educators

ACTIVITIES

OUTPUTS

SHORT-TERM OUTCOMES

- Increase knowledge of where to get medication

INTER-MEDIATE OUTCOMES

- Increase intentions to use medication

LONG-RANGE OUTCOMES

- Increase incidence of treatment adherence
- Decrease rates of missed dose

Outcome Objectives in Detail



Outcome Objectives are...

- **S**pecific
- **M**easurable
- **A**chievable
- **R**ealistic
- **T**ime-Phased

Outcome Objective Example

- *By the end of the project, of the 500 youth participants, 80% will indicate an 80% increase in knowledge regarding where to access reproductive health services, as measured by pre-post survey.*

How will we get there?



GOAL: Increase HIV treatment adherence rates among African Americans and Latinos living with HIV in the urban areas of our state

PROBLEM

INPUTS

ACTIVITIES

OUTPUTS

Activities are what you will DO...

- Conduct RFP process
- Develop and pilot training materials
- Conduct training of trainers
- Provide technical assistance

Outputs are your participants and products...

- Educators trained
- Youth served
- Materials and documents
- Policies

GOAL: Increase HIV treatment adherence rates among African Americans and Latinos living with HIV in the urban areas of our state

PROBLEM

HIV treatment adherence rates are low among African Americans and Latinos

INPUTS

- Drug subsidies
- Federal funding for clinics
- Health educators

ACTIVITIES

- Work with **CAB committee to identify barriers**
- Develop training program
- Train educators
- Implement home visits

OUTPUTS

- 12 trained educators
- Training package

SHORT-TERM OUTCOMES

- Increase knowledge of where to get medication

INTER-MEDIATE OUTCOMES

- Increase intentions to use medication

Process Objectives



Process Objective Examples

- *By year two of the project, staff will have trained 100 health education teachers in the state on the selected scientifically based health education curriculum.*
- *Of the 300 high risk youth targeted, 80% will complete all 8 prevention education sessions by the end of the school year, 2012.*

Ask yourself...

- Will this get us where we want to go?
- Is the logic model “logical”
- Is anything missing
- Is everything necessary

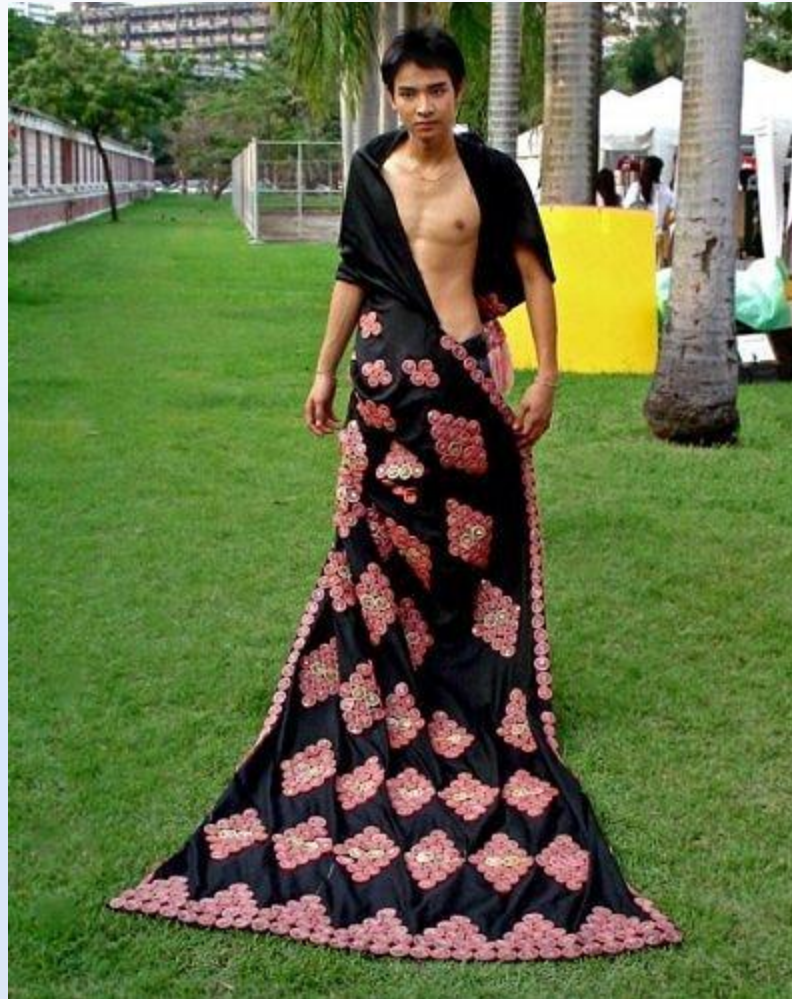


Final Points

- Involve a wide range of stakeholders
- Start early
- Revise as necessary



Questions





Thank you!

**We hope you join us for the next in our
“So What Now?!”**

Evaluation and Data Collection Webinar series:

**What is Really Going On Here...
Understanding Situational Analysis**

Feb 29th



For more information on the information presented or to request free CBA services, get in touch!

Tabono CBA Project

Center for Sexual and Reproductive Health Promotion

ETR Associates

251 Rhode Island St., Suite 204

San Francisco, CA 94103

(415) 252-0402 - office

(415) 252-0443 - FAX

B.A. - bal@etr.org

Carnelius - carnelius.quinn@etr.org